

YOUR BELL TENT

Contents

1 x Inner packing bag	1 x A frame for door in 7 parts
1 x Spare packing bag – off white canvas	11 x Standard guy ropes
1 x Main body of tent	1 x Longer guy rope for over door
1 x Groundsheet – ZIG or PIG*	12 x Ribbed steel J pegs for outer plus two spare
*ZIG = Zipped in groundsheet	3 x Rain cowls (including two spares)
*PIG = Pegged in groundsheet	2 x Spare spring buttons
1 X Central Pole in 3 parts	12 x Steel pegs plus two spares
1 x Central saucer base	1 x Mallet
1 x Central pole top cushion pad	1 x Instruction booklet

This is a step by step guide on how to put up your bell tent, take it down and pack it back into its bag.


The most important thing to remember is to make sure your bell tent is **COMPLETELY DRY** when you store it or mould can occur!

Weathering

Your tent will need to go through a weathering process for the tent to have its own natural water repellence. The canvas will need to completely soak in order to allow the fibres to swell and relax/shrink back to tighten the weave on drying. This wetting/drying process will not only allow the canvas to condition and gain its full waterproofing properties, but will also help to close up the stitching holes. This may take up to three attempts, depending on the amount of water absorbed into the canvas and the speed of the drying process from the sun.


<http://www.campingandcaravanningclub.co.uk/helpandadvice/gettingstarted/newtotents/tentfabrics/>

Putting up your Bell Tent

 Take the groundsheet out of the bag and lay it out. Rotate the groundsheet so the door is facing the desired direction.

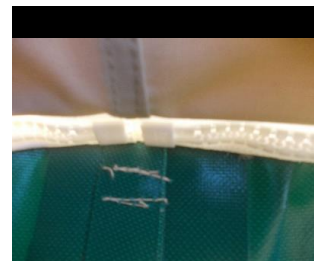
With a PIG, the door is on the lowered edge of the groundsheet.

With a ZIG, there is a separate smaller section of zip which is for the door.

 Take the canvas out of the bag and put it on top of the groundsheet lining up the door.

With a PIG, make sure the guy ropes line up with the peg tabs.

With a ZIG, zip in the canvas the whole way round starting from the back of the tent



🏠 Peg down the groundsheet using the small steel pegs. Attach the guy ropes to the canvas loops. After this they can be left in place for your next trip.

🏠 Put the central wooden pole together. It comes in three parts and the rounded end is for the top. Make sure the pole top cushion and the pole rest are handy for the next step. When assembled, there may be some play in the pole, as the joints allow for expansion of the pole if it gets wet.



🏠 Insert the pole through the door of the tent. Find the "top cone" of the tent and put the top cushion into the cone and then push the rounded end of the pole into the cone and push the pole upwards until it is upright, and 90 degrees to the ground. Align the bottom of the pole with the central marker on the groundsheet. Place the pole rest underneath the pole.



🏠 Loosely peg out the guy ropes making sure that you keep a straight line out from the seam on the canvas. Peg them about 1.9m out from the tent. Loosen the wooden slider to the bottom third of the rope so that you will be able to adjust it later. Do opposite guy ropes after each other for the first four guy ropes that you peg. Do not yet peg out the apex of the door.



- Assemble the A frame for the door. We would recommend having it in two pieces while entering the tent. Once inside the tent put the frame together and lie this flat on the floor with the apex in the middle of the tent and the feet at either side of the door. Zip up the door, then put the spike on the apex of the frame through the eyelet on the canvas apex. From the inside of the tent tie the tent to the frame.



- Slot the small round plastic rain cowl onto the top of the A frame on the outside
- Peg out the apex of the door, again making sure that you follow the line of the seam.
- Adjust your guy ropes. You are aiming for a vertical wall between where the groundsheet is pegged and where the wall meets the skirt and the guy rope comes out. If it is over hanging for one particular guy rope then loosen that guy rope and tighten the one on the opposite side.

IMPORTANT – Tents with zipped in groundsheets

The side walls must be vertical, with the zip raised to approx four inches above the ground. The canvas band must cover the zip so that the zip is not exposed to the elements. The guy ropes should be pegged out far enough so that the wooden slider is approx one third of the way along the rope from the ground. The groundsheet should be under the canvas and barely visible with no outside shelf where water could gather. The sides should look as below



This must be checked daily, and adjusted accordingly and more frequently in windy conditions, to prevent any water ingress into the tent.

We recommend that the bottom door zips are only zipped to within two inches of the ends for everyday use, and that these are only fully unzipped when totally removing the groundsheet.

Packing away your Bell Tent

- Remove the rain cowl and store in a safe place. Unpeg the guy rope from the front of the door and then take out the door frame and put it back in its bag. Then unpeg all the other guy ropes from around the tent. Take the pole out through the doorway – make sure you pick up the pole top cushion and the pole rest when you leave the tent.



- Making sure that you keep the canvas over the groundsheet (to prevent it getting wet) put all the guy ropes inside the tent. Then fold it in half, and then in half again as shown in the photos below. Make sure that the width of your tent will fit lengthways in the tent bag.



- Now fold it up and put it into the tent bag

Maintenance and care

Storage

Storing your tent clean and DRY is the most important part of caring for your bell tent. Canvas must only be air dried naturally. Canvas is vulnerable to mildew which loves damp, warm conditions, to avoid mildew ensure that your tent is fully dry before storing it. If you need to pack away a wet tent it is vital that you do not leave it for more than 24 hours before hanging it or draping it somewhere to dry.

Groundsheet

Make sure that the groundsheet is set out on level ground with no sharp objects or anything else which could damage it.

Pegs

Do not pull the pegs out using the guy ropes or fittings as this could damage your tent. Use your hands, another peg or a suitable tool to avoid any such damage.

Canvas

Canvas requires some basic maintenance to keep it free from mildew and in good condition. Our tents are made of canvas which is treated with fire retardant, rot inhibitor and water proofing agents. If you follow the storage and cleaning instructions below you will get many years out of your tent.

Cleaning and Reproofing

To clean dirt from the canvas, allow the tent and dirt to dry and then brush the dirty area with a soft brush. Canvas can be rinsed with clean water (without any cleaning products), but do not use a pressure washer as this is too strong and can wash out the proofing agents. Dirt should be removed from the tent as soon as possible, definitely within a week. When it is not possible to simply brush off the dirt, or wash off with clean water there are several canvas cleaning and re-proofing products which you can use. We would recommend that you use Nikwax tech wash and follow with Nikwax cotton proof. If you have a particularly stubborn stain, or have mould then we would recommend you use Mould & Mildew Stain Remover, and again follow with Nikwax cotton proof. For a list of stockists/online stores go to <http://www.nikwax.com/en-gb/stockists/index.php>.

Waterproofing

It is likely that the first time your tent is used in wet weather that it will leak a little. This is **NORMAL!** The canvas is treated with water proofing agents, but in order for the fabric to develop its water repellence the fibres need to swell and relax back which tightens the weave, this should happen after the first time your tent gets wet.

Repairs

Small rips in the canvas can be stitched together using a normal needle or thread, or you can use [Tear-Aid original instant repair patches](#). If you feel that you are unable to carry out the repair yourself then your tent can be taken to a professional Tent Repairer and fixed for a reasonable price.